



The Most Versatile Lightweight Vehicle for Fire & Rescue Operations

SINCE 1967

High Operator Safety



- Amphibious, Multipurpose Vehicle
- Large Adaptable Rear Cargo Platform
- Quick Change of Customized Equipment
- Low Cost of Ownership
- All Season Operation for High Utilization

APPLICATIONS

- Search & Rescue
- Emergency Medical Services
- Disaster & HAZMAT Response
- Law Enforcement
- Homeland Security
- Coast Guard
- Firefighting & Prevention
- Vector & Pest Control
- People & Equipment Transport
- Support Vehicle in Difficult Terrain

FEATURES & CAPABILITIES

- Very Low Ground Pressure
- Environmentally Friendly
- Operates in Flooded Areas
- Crosses Deep Mud and Marshy Terrain
- Fully Amphibious*
- Up to 6 Passengers**
- Travels Over Deep Snow and Ice
- High Altitude Performance
- Overcomes Obstacles and Rocky Terrain
- Hauls Trailers and Supplies

EXTREME TERRAIN VEHICLE SOLUTIONS



Search & Rescue



First Aid Support (Red Cross / Crescent)



Operation in -40°C (-40°F)



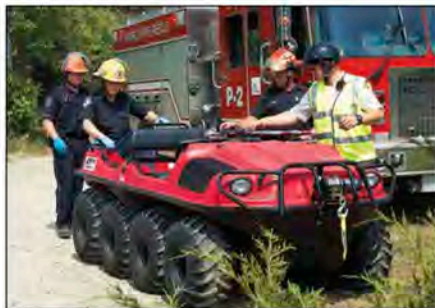
Deep Mud Performance



Disaster Response



Optional Roll Over Protection Structure



Fire & Rescue Support



Amphibious Personnel Carrier



8x8 CENTAUR with Fire Pump

SPECIFICATIONS	CENTAUR 954 DT	ARGO 8x8 XTD	ARGO 8x8 XTI	ARGO 8x8 750 HDi
Engine	34 HP, turbo diesel	24 HP, in-line, 3-cylinder, diesel	30 HP, 4 cycle OHV V-Twin, petrol	30 HP, 4 cycle OHV V-Twin, petrol
Transmission	Automatic	Automatic	Automatic	Automatic
Land Speed	25 mph (40 km/h)	17 mph (27 km/h)	17 mph (27 km/h)	20 mph (32 km/h)
Carrying Capacity	1,500 lbs (680 kg)	1,340 lbs (608 kg) on land 840 lbs (382 kg) in water	1,500 lbs (680 kg) on land 1,000 lbs (454 kg) in water	1,150 lbs (521 kg) on land 1,000 lbs (454 kg) in water
Towing Capacity	2,200 lbs (1000 kg)	2,000 lbs (905 kg)	2,000 lbs (905 kg)	1,800 lbs (816 kg)
Drawbar Pull***	2,400 lbs (1090 kg)	1,800 lbs (816 kg)	1,800 lbs (816 kg)	1,460 lbs (660 kg)
Controls	Automotive-style	Multi-position, one-piece, ergonomic handlebar steering	Multi-position, one-piece, ergonomic handlebar steering	One-piece, ergonomic handlebar steering
Winches	Optional front and rear winches	Optional front and rear winches	Optional front and rear winches	Optional front and rear winches
Under Body	Full, underbody skid plate	Full, underbody skid plate	Full, underbody skid plate	Full, underbody skid plate
Upper Body	Seats 2, full cab enclosed ROPS, versatile rear cargo platform	Seats up to 4 on land or water, ROPS available, versatile rear cargo platform	Seats up to 4 on land or water, ROPS available, versatile rear cargo platform	Seats up to 6 on land / 4 on water, ROPS available

FERNO #9 Stretcher Kit and Advantage Basket Stretcher are available for **ARGO 8x8 700 HD and 750 HDi** models. Note: Mounting Assembly (stretcher frame and basket adapter) required. **WHELEN** lighting & siren package are also available. Contact your dealer for more information.

Ground Pressure	FULL LOAD CAPACITY			
	with 15" Mud Tracks	2.2 psi (15 kPa)	1.91 psi (13.02 kPa)	1.91 psi (13.02 kPa)
with 18" Mud Tracks	1.27 psi (8 kPa)	1.06 psi (7.23 kPa)	1.06 psi (7.23 kPa)	0.84 psi (6 kPa)

Please contact us for more details about customized add-on solutions.



Simon Bolivar Cad.19/3-4
 Çankaya / Ankara /Turkey
 Tel: +90 312 441 4104
 Fax: +90 312 441 4108
 www.gigra.com info@gigra.com



*Applies to ARGO 750 HDi and ARGO XT models. The CENTAUR is not fully amphibious, but can cross water with a fording depth of 26" (660 mm). ** Applies to ARGO 750 HDi. *** Drawbar Pull ratings based on ISO 7464-1983. Some vehicle applications shown are for demonstration purposes, originating from third parties and not available from ARGO. In all cases, vehicle load limits have been considered. For safety, always wear approved helmets and eye protection. When operating in water, always wear approved Personal Floatation Devices. Always remain seated while in the ARGO. 678-17 • Printed in Canada 07/2013